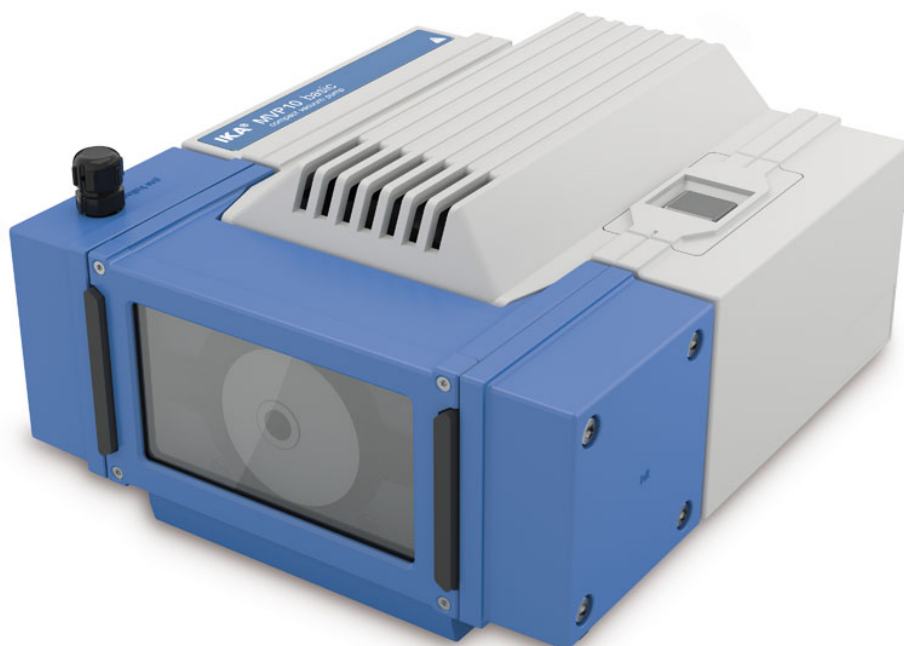


Data Sheet

Laboratory reactors / Vacuum



MVP 10 basic vacuum pump

For dry, oil-free applications

- Slimline, compact design and long service life
- Straightforward servicing and simple maintenance
- Diaphragm pump that is highly resistant to chemicals as all parts that come into contact with gas are made of PTFE or PTFE compounds

Accessories: VCV 1 Vacuum control valve manual, VCV 2 Vacuum control valve digital, VSS 1 Vacuum safety set, VH.SI.8 Vacuum hose

Technical Data

Pump rate max. (50/60Hz) [m³/h]	1.7
Pump rate max. (50/60Hz) [l/min]	28.3
Final pressure without gas ballast [mbar]	7
Final pressure with gas ballast [mbar]	15
Suction levels	2
Cylinder	2
Connection diameter suction side [mm]	10
Connection diameter pressure side [mm]	10
Gas ballast valve	yes
Input pressure [mbar]	7 - 1050
Speed range [rpm]	1380 - 1680
Nominal speed [rpm]	1380
Noise at low. pressure [dB(A)]	65
Dimensions (W x H x D) [mm]	245 x 155 x 320
Weight [kg]	11.5
Permissible ambient temperature [°C]	10 - 40
Permissible relative humidity [%]	80
Protection class according to DIN EN 60529	IP 54
Voltage [V]	230 / 115 / 100
Frequency [Hz]	50/60
Power input [W]	180

Ident. No. 0003980000